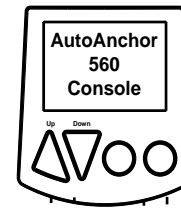
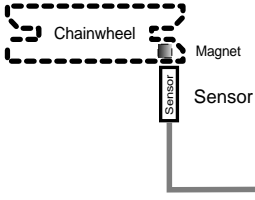


# AA560V2.3: AC, HYDRAULIC AND PLC WIRING FOR AA560 SYSTEM

Refer to Installation Instructions for magnet and sensor fitting

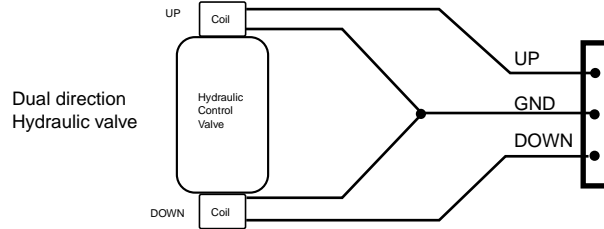


For dual console installation:  
Join sensor wire with a T-Junction  
Connector  
Part No 9506

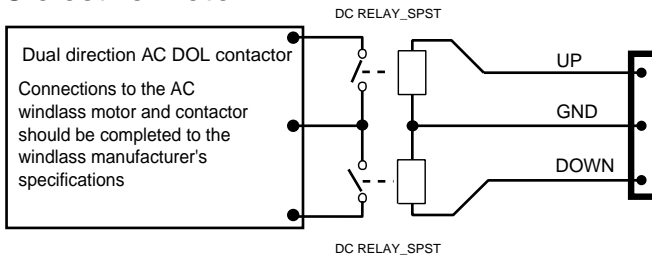
Match these wires  
colour for colour

## Example windlass drives

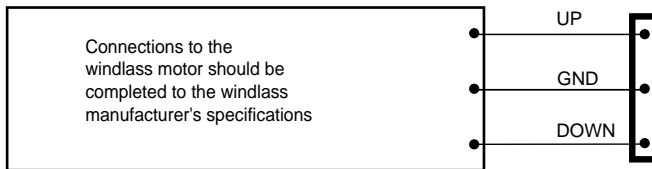
### Hydraulic Drive



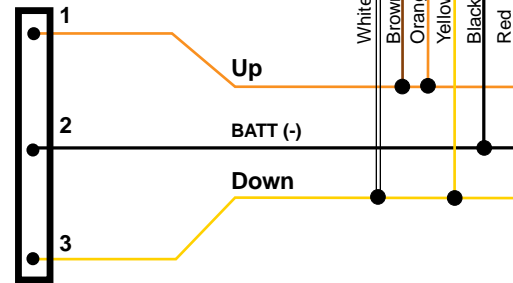
### AC electric motor



### AC VFD, PLC or solid state windlass drive

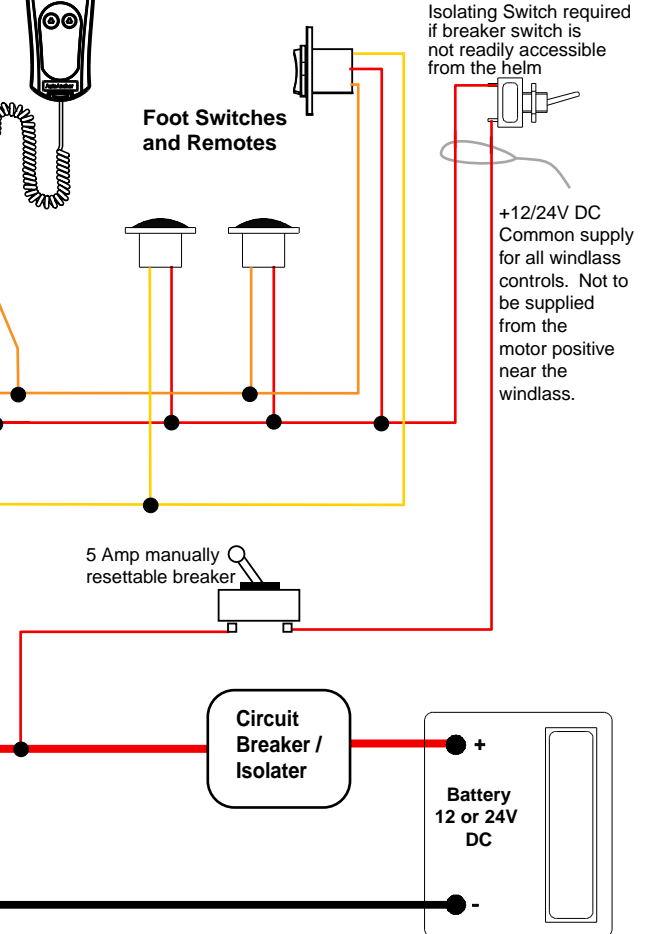


Check rotation of the windlass before fitting the rode. Swapping the terminals will reverse the windlass direction.



Note: When connecting to solid state switching or other low current windlass drives eg. PLC or AC variable frequency, a dummy resistor load (Part #9515) may be required to provide sufficient loading and to meet EMC and safety considerations. The resistor pack should be installed close to the windlass control not near the AA560. Refer to page 12 in the Owner's Manual.

**IMPORTANT:** All windlass controls must be wired in parallel



**WARNING:** Power must be disconnected during installation and when making any changes to wiring after installation

INSTALLATIONS MUST BE CARRIED OUT IN ACCORDANCE WITH USCG, ABYC, NMMA and BMEA REQUIREMENTS